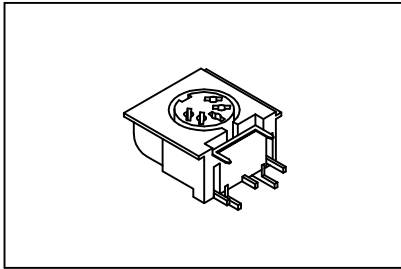


4002 Series

Circular Din Jack Right Angle P.C.B Mount Type

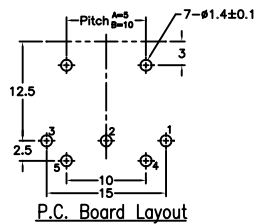
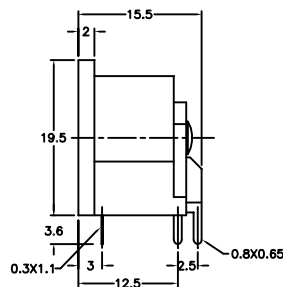
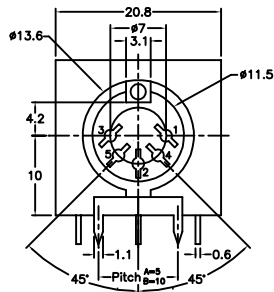


Material:

Housing: 15% Glass filled PBT UL94V-0.
 Contacts: Brass, Tin Plated.
 Ground: Brass, Nickel Plated.

Electrical Characteristics:

Current Rating: 1 AMP.
 Insulator Resistance: 100MΩmin. at DC 500V.
 Contact Resistance: 20mΩmax.
 Operating Temperature: -55°C ~ +105°C.
 Insertion Force: 0.5~5.0Kg.
 Withdrawal Force: 0.4~5.0Kg.
 Durability Test: 5000 mating cycles min.



Ordering information

4002-	5	A
Series	Position 5	A: Foot Print 5.0mm B: Foot Print 10.0mm